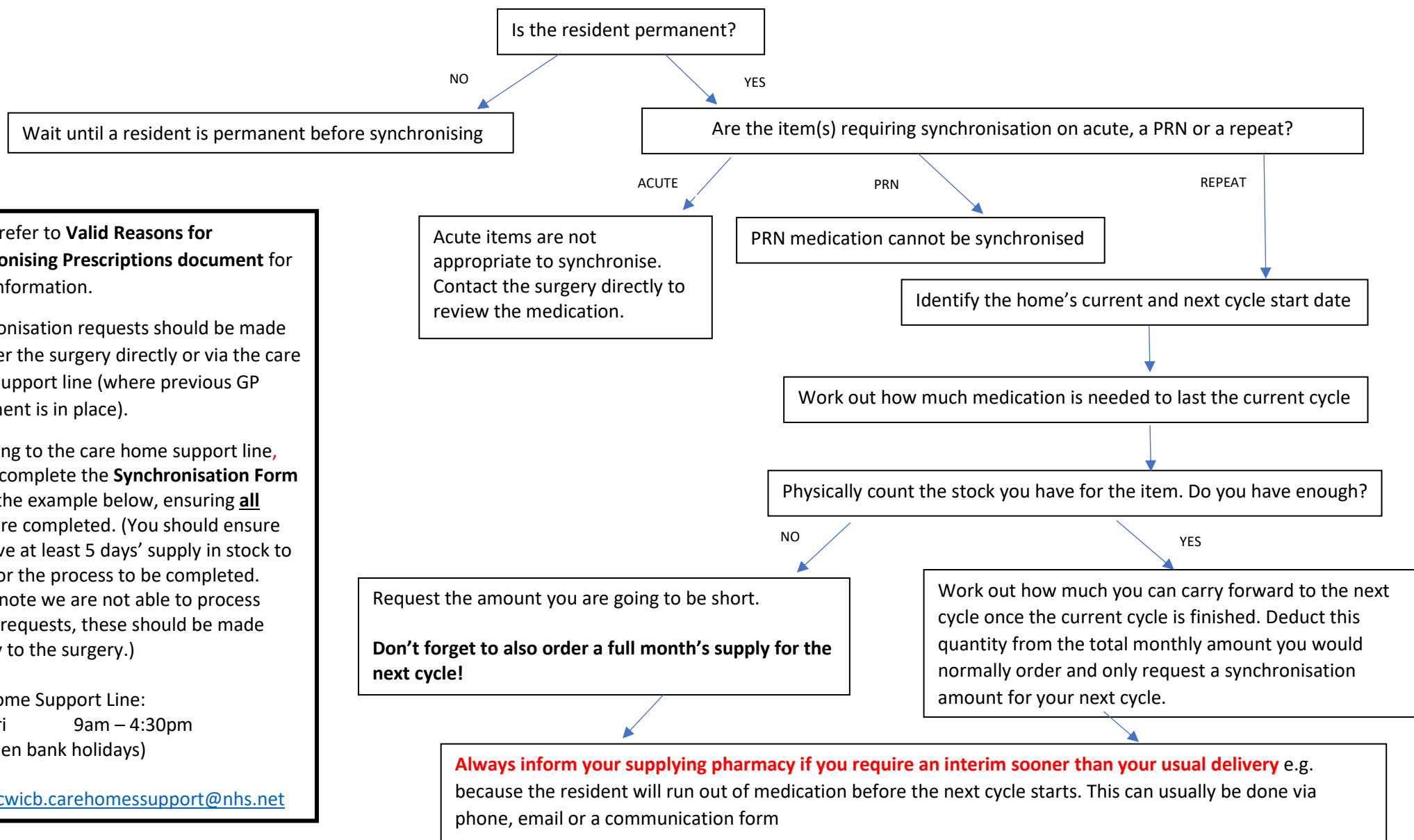


Synchronising Medication Process



Example of completed Synchronisation Form

****Please ensure all fields are completed**** before sending to cwicb.carehomessupport@nhs.net

| | Resident Name: | Joe Bloggs | | | | | | | |
|------------------------|-----------------------|------------------------------|--|-------------------|-----------------------------|------------------------------------|--|-----------------|--|
| | Date of Birth: | 12.04.1945 | | | | | | | |
| Date meds were counted | Cycle Start Date | Drug Name, Strength and Form | Directions – (make sure to list OD, BD etc.) | Total Monthly Qty | How many currently in stock | No of days to the end of the cycle | Total number of doses needed to end of the cycle | Amount to order | Reason why out of synch: for example: <ul style="list-style-type: none"> • New resident • Hospital admission • New medicine • Dose or form changed |
| 23/8/23 morning | 16.8.23 | Bisoprolol 2.5mg tabs | 1 OD | 28 | 10 | 20 | 20 | 20 | Hospital admission |
| | | | <i>The resident needs 20 tablets to cover the current cycle as the dose is once daily, but only has 10 tablets in stock. $20 - 10 = 10$ tablets needed to synchronise. Note: The resident will also require 28 x 2.5mg tablets for the next medication cycle.</i> | | | | | | |
| | | Ferrous sulphate 200mg tabs | 1 BD | 56 | 74 | 20 | 41 | 23 | Dose changed |
| | | | <i>The resident has enough tablets to cover the current cycle (20 days left, but 41 doses required. 40 as twice a day for the next 20 days plus a dose for this evening = 41 tablets.) $74 - 41 = 33$ tablets can be carried forward into the next medication cycle. Deduct this from the normal monthly quantity that would usually be ordered $56 - 33 = 23$ tablets needed for the next cycle to synchronise.</i> | | | | | | |
| | | | | | | | | | |