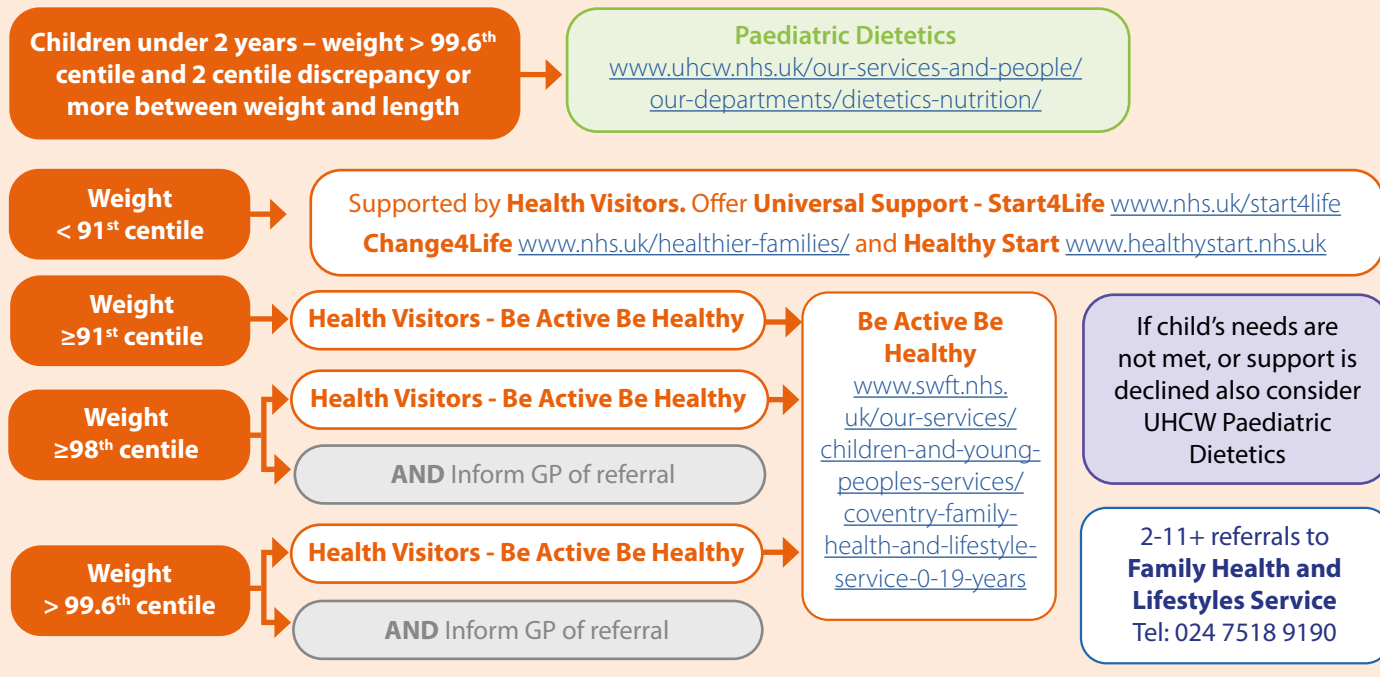
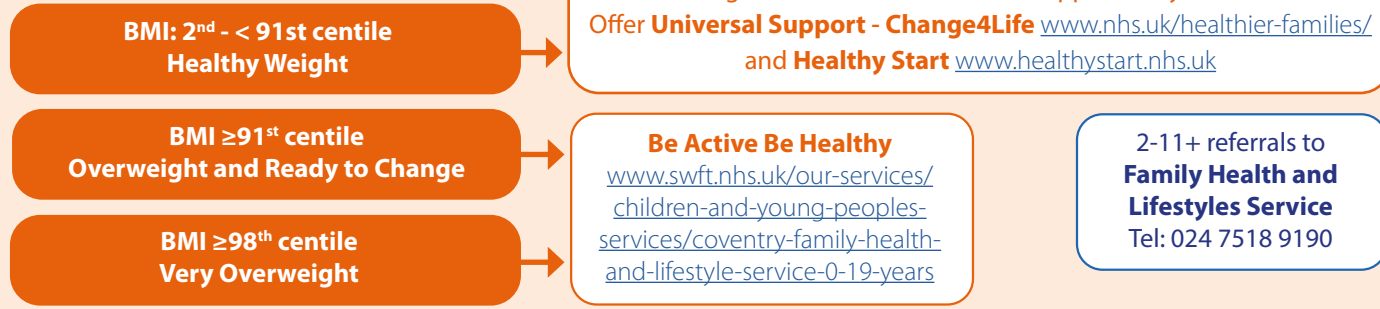




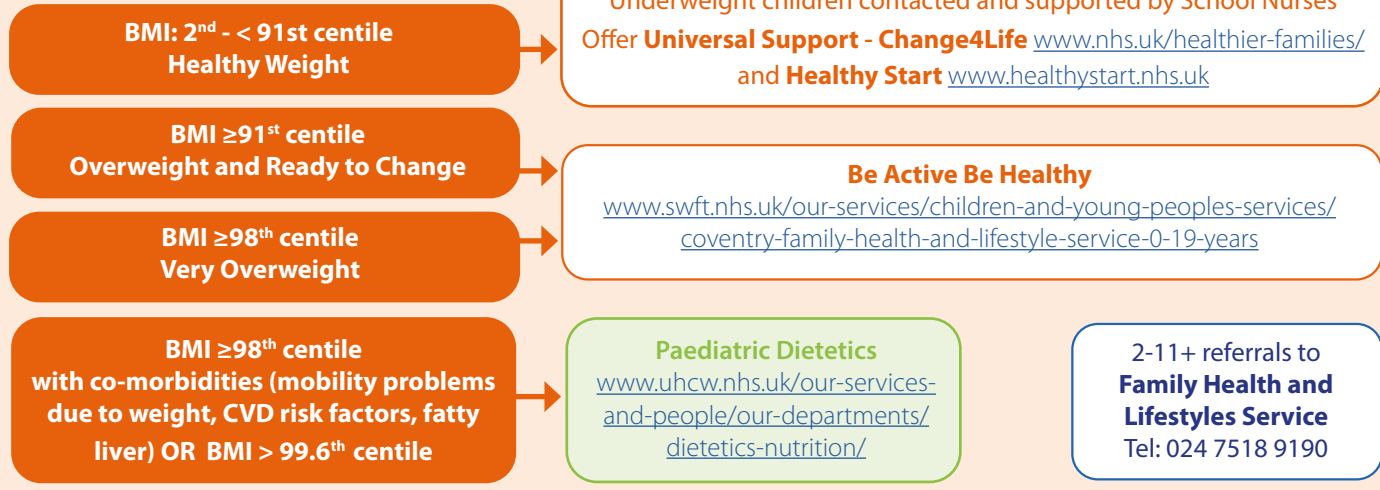
## Those aged 2 to 4 years



## Those aged 5 to 11 years

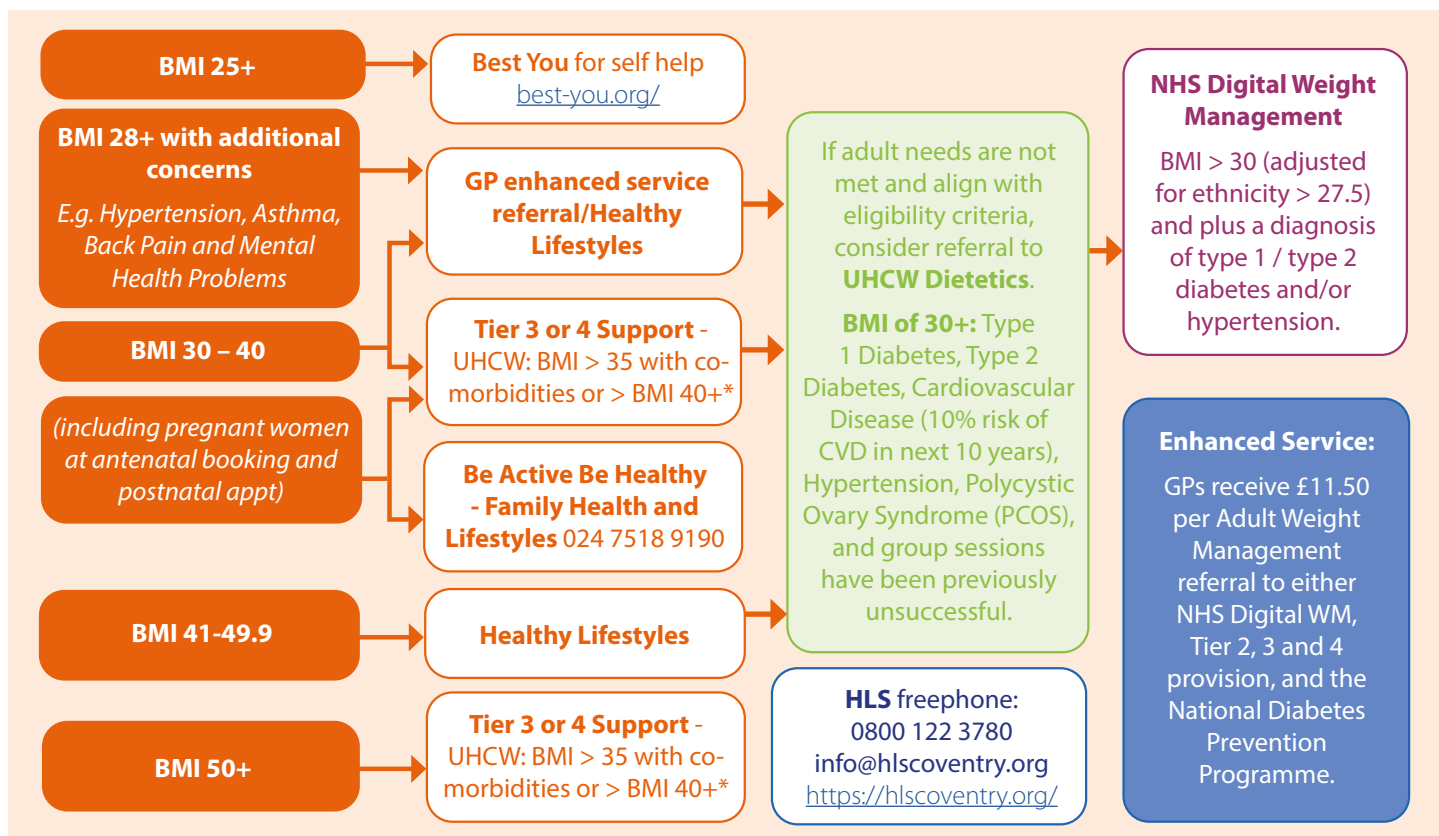


## Those aged 11+ years

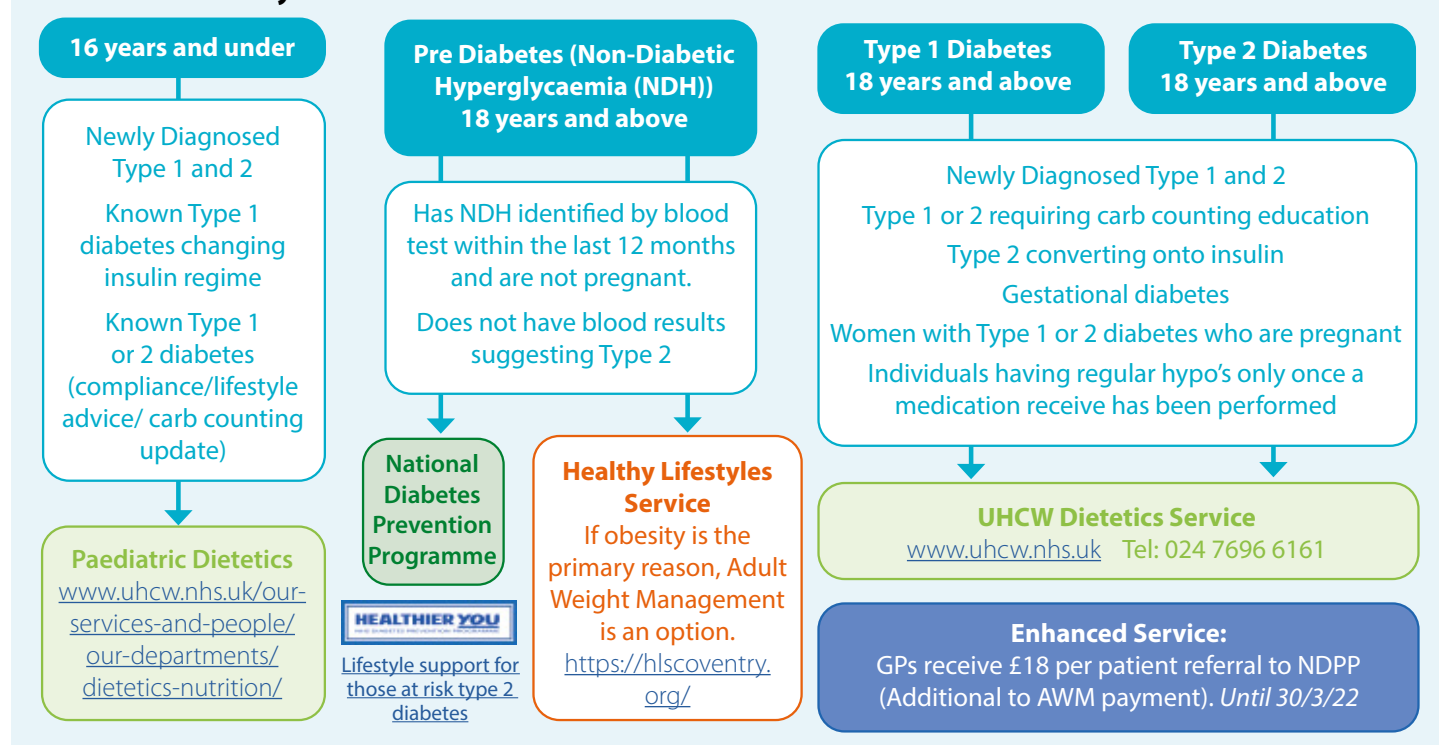


### BMI Centile (children)

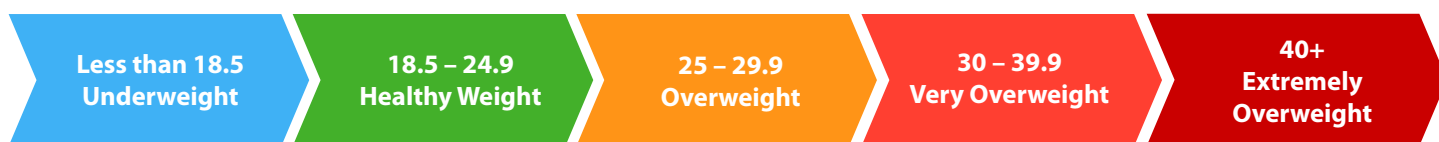




## Diabetes Pathway



## Adult BMI (18+)



Black, Asian and other Minority Ethnic (BAME) groups have a higher risk of developing some long-term (chronic) conditions, such as [type 2 diabetes](#). These adults with a BMI of: 23 or more are at increased risk, 27.5 or more are at high risk

\* BMI adjusted to 32.5 for BAME groups